

SiCBLOX™
S Y S T E M S



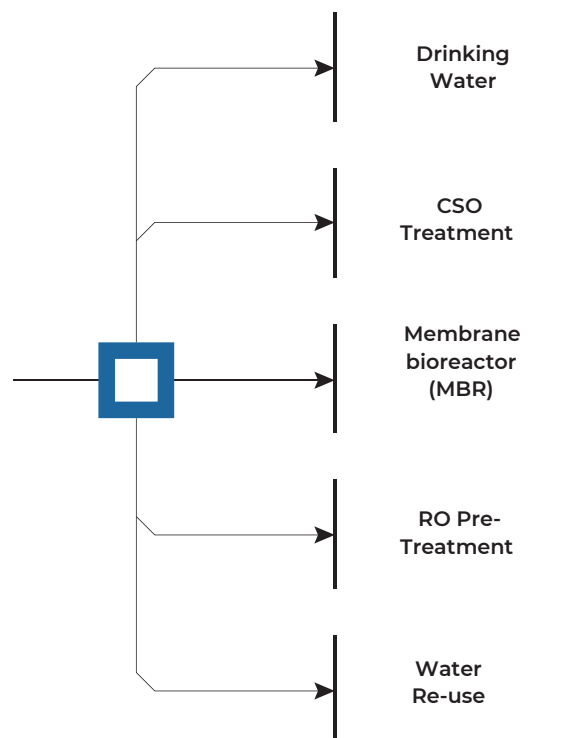
A person with dark hair tied back, wearing a white tank top and blue shorts, stands with their back to the camera on the peak of a large, dark, textured rock. Their arms are outstretched horizontally to the sides. The rock is situated in the middle of a vast ocean with visible waves. The sky is a clear, pale blue. The overall mood is one of freedom and achievement.

**sic
solutions**

WHERE IS SiC USED?

SiC IS USED IN A WIDE VARIETY OF WATER AND WASTEWATER APPLICATIONS IN BOTH MUNICIPAL AND INDUSTRIAL SECTORS. IT'S PRIMARY GOAL IS TO REMOVE SOLIDS, TOXIC POLLUTANTS, AND PATHOGENS, CREATING A SAFE, CLEAN, AND SUSTAINABLE WATER SOURCE .

**SiC is used
in applications
such as**







SIC CERAMIC MEMBRANE

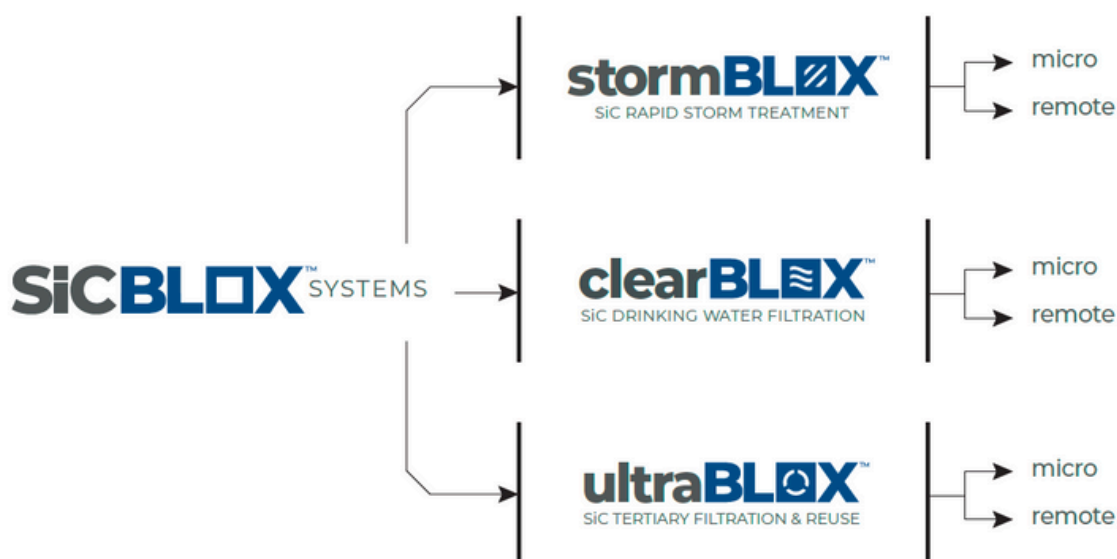
S Y S T E M S

All too often all of the focus is placed on the membrane, portraying it as a black box that is independent of its surroundings. The reality is that membranes are one of many subsystems that go into any water or wastewater treatment plant. While the membranes are often the workhorse of a treatment system, they can only be successful if the rest of the system is designed properly.

The combination of Cembrane SiC Technology with Enpure's system integration and process expertise have created a powerful new brand of treatment systems: SiC BLOX Systems. SiC BLOX Systems have the widest range of applications with the widest operating window to solve new and existing problems.

SiC Blox systems come in conventional, In ground designs, packaged plants ("micro"), and mobile configurations ("remote").

1 2 3 4 5 6 7 8 9 10 11 12 13 14 15 16 17 18 19 20 21 22 23 24 25 26 27 28 29 30 31 32 33 34 35 36 37 38 39 40 41 42 43 44 45 46 47 48 49 50 51 52 53 54 55 56 57 58 59 60 61 62 63 64 65 66 67 68 69 70 71 72 73 74 75 76 77 78 79 80 81 82 83 84 85 86 87 88 89 90 91 92 93 94 95 96 97 98 99 100



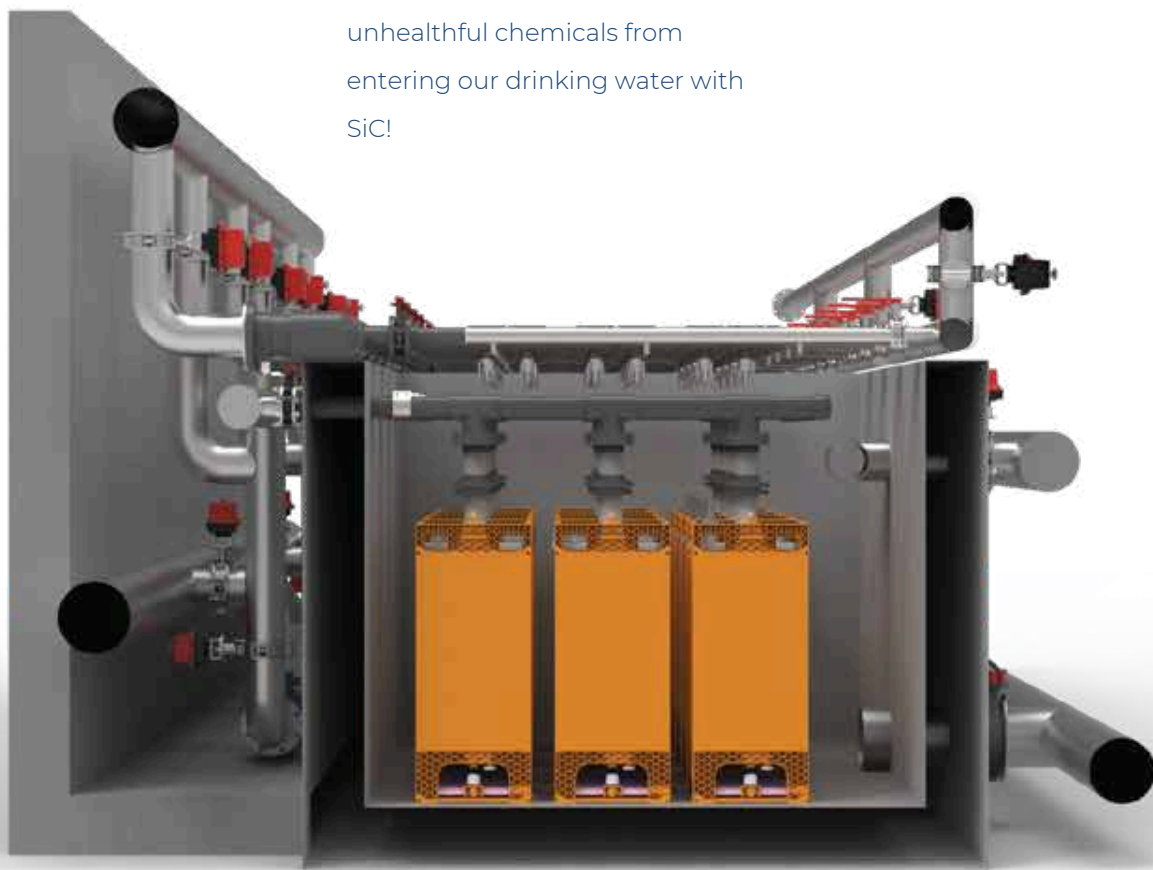


clearBLOX™

SiC DRINKING WATER FILTRATION

Fresh water supplies are severely stressed and access to safe drinking water becomes a greater challenge each and every day. It is imperative we protect what fresh water we have access to ensure health and safety is never compromised. As more and more exotic chemicals contaminant our water, the need for new approaches to ensure safe and clean water has never been more critical. Let's block these unhealthful chemicals from entering our drinking water with SiC!

With rapidly ageing infrastructure, clearBLOX systems are perfectly suited for upgrading/retrofitting conventional gravity filter plants to meet current drinking water requirements. clearBLOX ensures our water is safe and that we never have to compromise our health. clearBLOX protects us from today's most toxic pollutants by creating new treatment approaches and solutions for water.





stormBLOX™

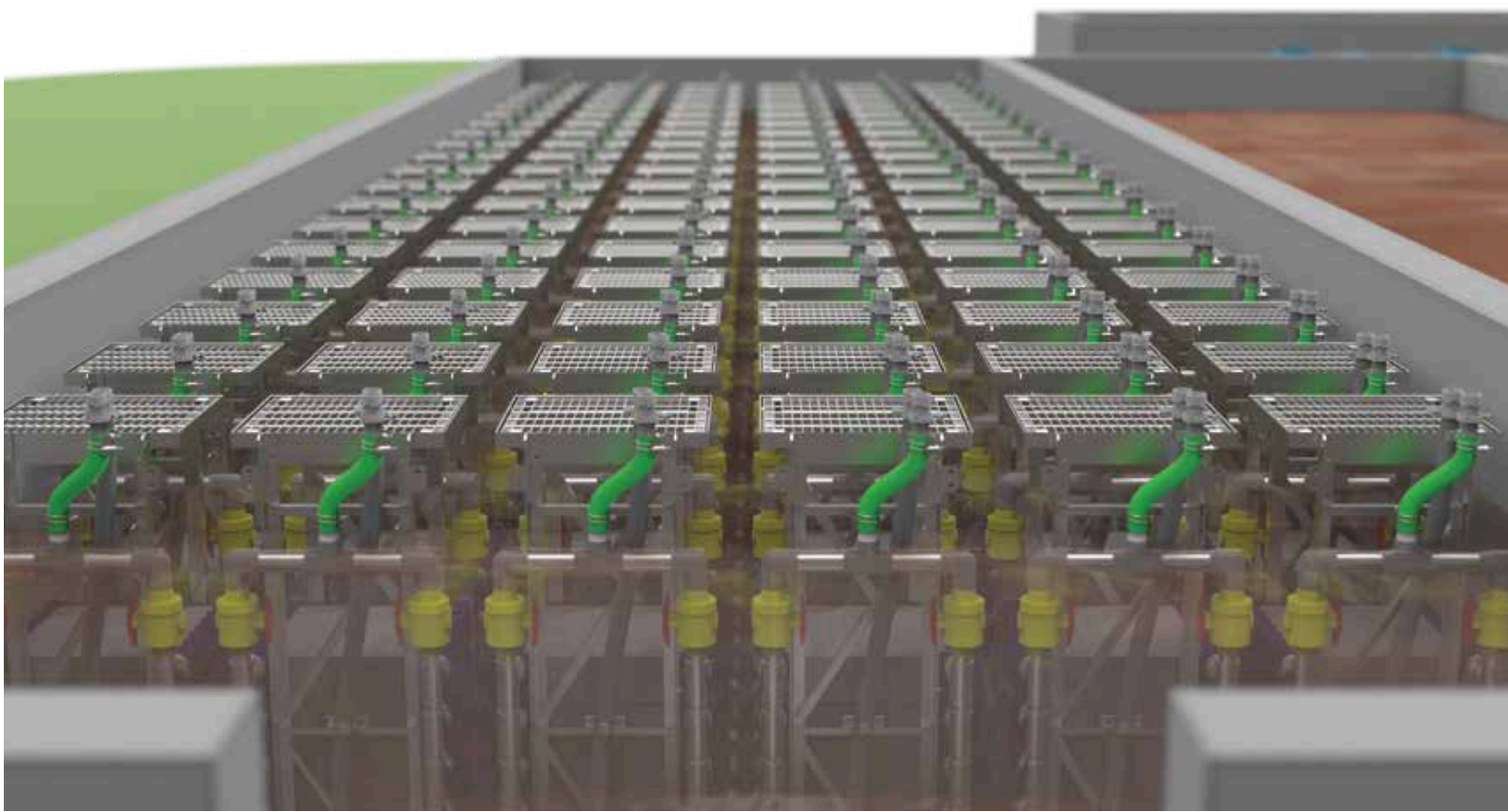
SiC RAPID STORM TREATMENT

Climate change is creating bigger storms and more pollution. Every year a huge quantity of untreated sewage are discharged into our waterways. Beaches close. Fish die. People get sick. Storm driven sewer discharges are a big problem, and they're getting worse. stormBLOX technology offers a simple and a sustainable treatment solution to this huge problem.

stormBLOX instantly treats right at the on-set of a storm while physically blocking solids and pathogens from being discharged into our waterways.

Other treatment options, such as ballasted clarification, compressed media filtration, cloth filtration, and chlorination simply can't treat storm flows as quickly and as effectively as stormBLOX.

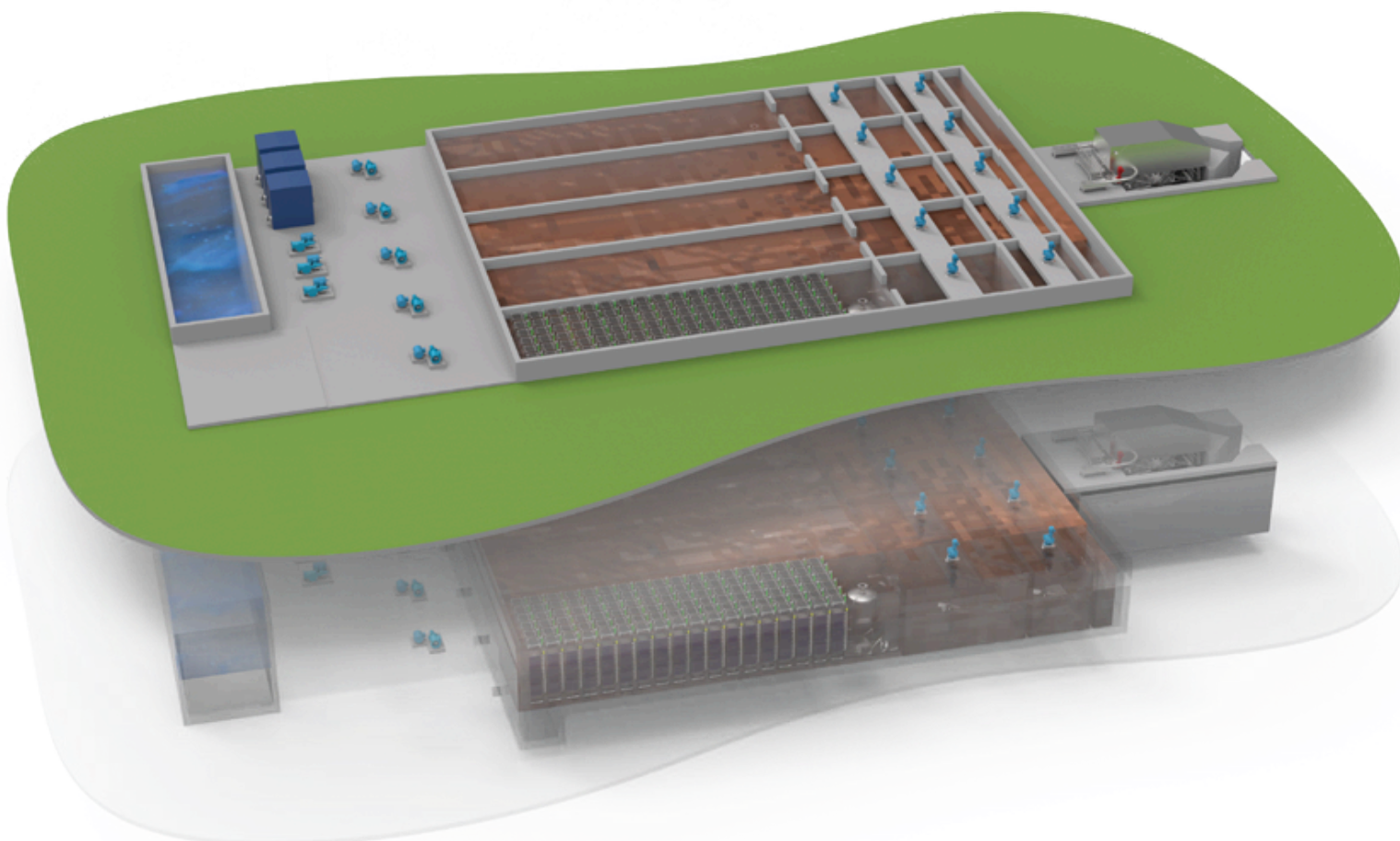
Plus, stormBLOX effluent meets all disinfection requirements without supplemental chemicals, preventing toxic by-products from harming aquatic life.





stormBLOX™

SiC RAPID STORM TREATMENT



stormBLOX IS USED IN THE FOLLOWING APPLICATIONS/MARKETS:

- CSO Treatment

BENEFITS OF stormBLOX INCLUDE:

- Disinfection chemicals
- Instantaneous treatment
- Utilize as tertiary filtration system during dry weather
- Extremely small footprint, easily fits into existing infrastructure
- Easily placed off-line regardless of weather conditions



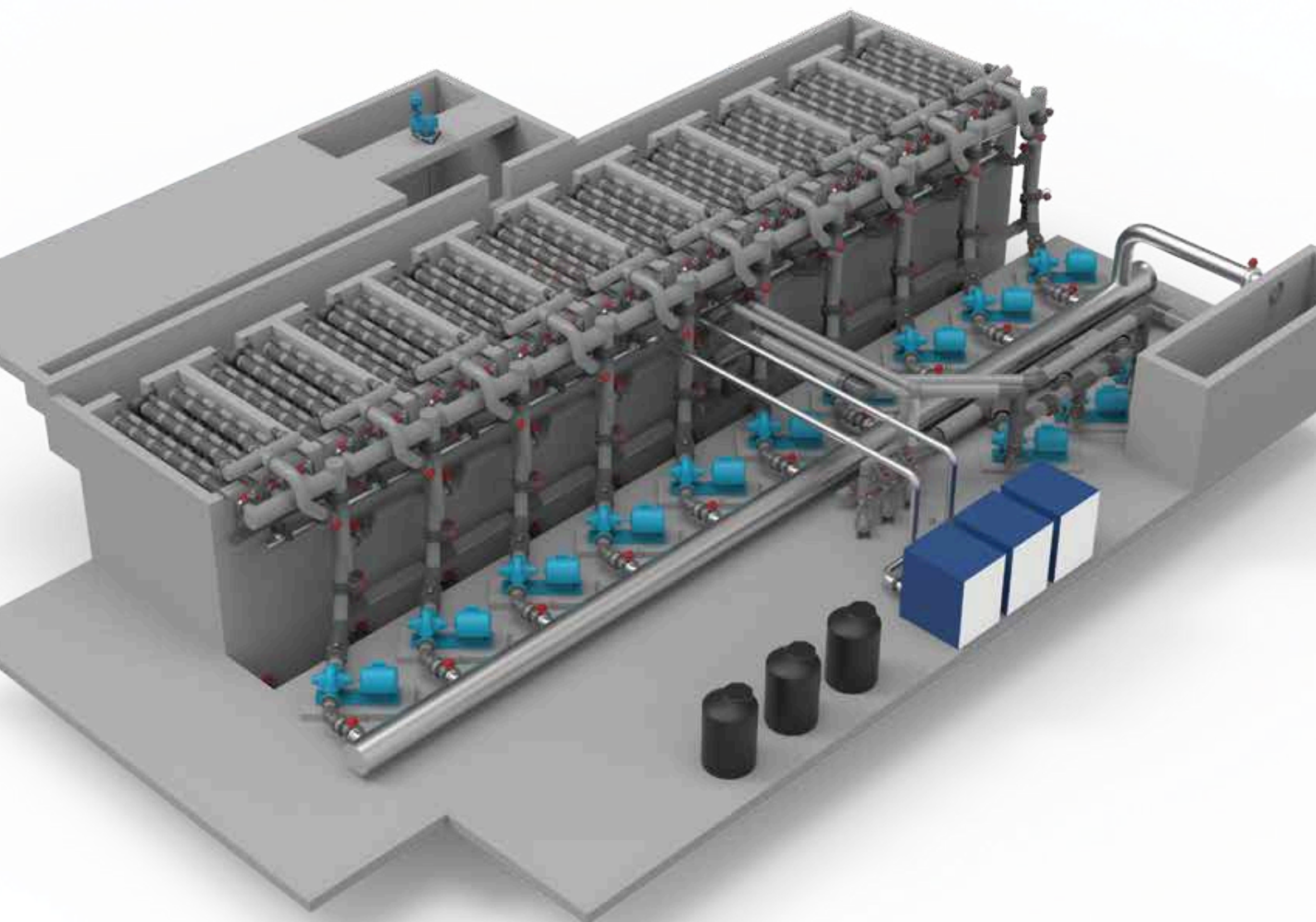


ultraBLOX™

SiC TERTIARY FILTRATION & REUSE

There simply isn't enough clean water in our world today. Fresh water supplies are under severe duress due to demand and pollution. What clean water we do have is rapidly vanishing as extreme droughts strengthen their grip. Simply put, we need more water! Effluent from conventional wastewater treatment plants is a readily available, reliable, and renewable resource that we don't take advantage of. ultraBLOX is the most versatile

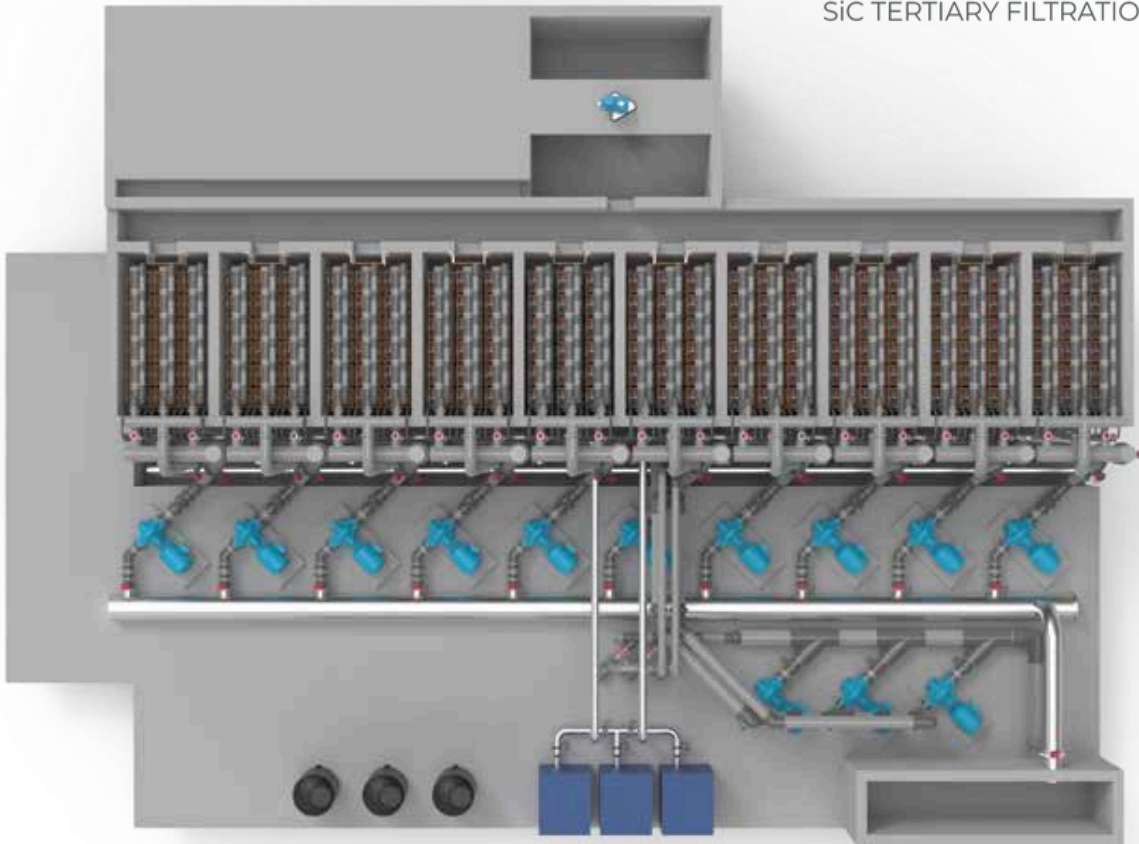
and advanced tertiary system for creating clean, pure, and safe water. Placing the SiC membrane at the final step of the plant allows you to prevent phosphorus, metals, pathogens and other trace contaminants from passing. Reuse and discharge to our water ways is safer than ever before. By creating a new and reliable water source, ultraBLOX helps alleviate pressure on already strained water sources.





ultraBLOX™

SiC TERTIARY FILTRATION & REUSE



ULTRABLOX IS USED IN THE FOLLOWING MARKETS:

- Advanced treatment of secondary effluent to essentially zero solids.
- Advances reuse such as Title 22
- Industrial process water make-up Hollow fiber plant rehab Plants
- with TP limits <0.1mg/l and Plant will low heavy metal limits

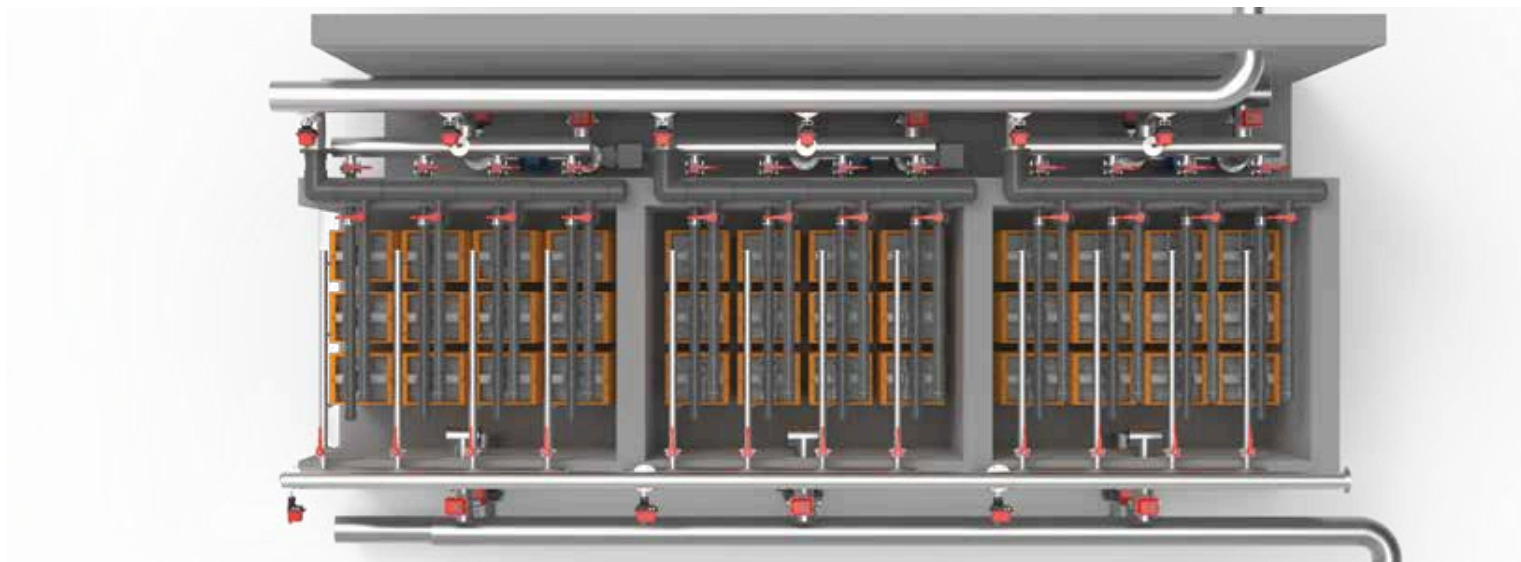
BENEFITS OF ULTRABLOX:

- Increase capacity of existing hollow fiber plants
- Quick and full recovery, minimize impacts of EPS and algae fouling
- Combine with ozone, PAC, enhanced coagulation, or tertiary MBR for advanced treatment capabilities
- Takes less chemical to achieve low TP limits
- Pathogen removal
- Heavy metal removal
- Lower downstream treatment (RO, UV, etc.) costs



clearBLOX™

SIC DRINKING WATER FILTRATION



clearBLOX IS USED IN THE FOLLOWING APPLICATIONS:

- Conventional gravity filter retrofit
- Filter backwash recovery
- Metal, including radium, removal from groundwater
- BWRO pre-treatment
- SWRO pre-treatment
- Surface water filtration for potable water.
- Submerged hollow fiber plant retrofit

BENEFITS OF clearBLOX:

- Performance and effluent quality independent of incoming feed
- Eliminate polymers
- Maximize water recovery
- Increase capacity of existing hollow fiber plants
- Lowest SDI (RO pre-treatment)
- DOC/THM pre-cursor removal
- Remove complex organic compounds such as pharmaceuticals or PFAS
- Minimize or reduce post disinfection requirements
- Lower downstream treatment (RO, UV, etc.) costs
- Higher overall water recovery (i.e. less wasting)



www.enpure.co.uk
 Tel: +44(0)121-683-2800
 Email: info@enpure.co.uk